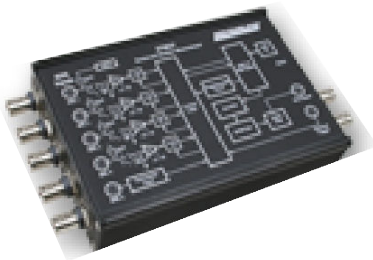


Data Acquisition & Data Logging Solutions



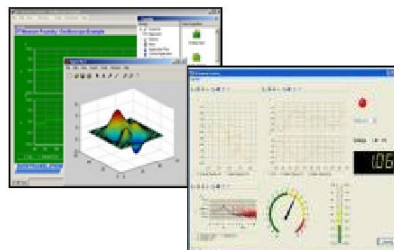
We are a team of professionals in the field of Instrumentation Engineering. We carry more than 50 man years of experience in various domains. We provide Customized Innovative, Proven, Value Added Solutions in the field of Industrial Instrumentation, Test and Measurement, Data Acquisition and Logging, Image Grabbing and Analysis, Industrial Automation and Control.



Present Industrial demand for monitoring and validation of a process or a project require an increasing diversified data logging capabilities. We provide integrated solutions for different kinds of data logging and data acquisition needs to various industries like Engineering Companies, Automotive Industry, Research Laboratories including the Life science and Biotechnology Laboratories.



As a part of providing customized effective and durable solutions we deal with proven best-in-the-segment products from the leading companies across the globe such as Grant - UK, DataTaker - Australia, Eltek - UK, Data Translation - USA etc.





**Aashay Measurements
& Controls**



Grant

dataTaker®

Eltek

SQ2020/2040 General Purpose Data Loggers



Squirrel 2020/2040 series, the new generation data loggers from Grant Instruments combines higher channel count with the same high performance, comprehensive features and universal inputs of the smaller 2020 in a neat compact and portable instrument. Using multiple analogue to digital converters, twin processors and removable memory options positions the 2040 series as the ideal data logger for industrial, scientific research and quality assurance applications requiring up to 32 input channels.

Oven Temperature Profiling - Paint Finishing



Grant boasts over 40 years experience in manufacturing oven recorders for the paint and finishing industry. This expertise is demonstrated in the easy to use and affordable OMK610 oven monitoring system. The OMK610 comes complete with logger, software, a thermal barrier and 4 temperature probes to offer you a full temperature solution for measuring the coating process.

DT 8X Series Data Logging System



The dataTaker DT80/85 extends the DT8x range to applications requiring more sensors or complex wiring combinations & USB memory stick for data transfer. The dataTaker DT85's Dual Channel concept allows up to 32 isolated or 48 common referenced analog inputs to be used in many combinations. Regulated 12Vdc output, flexible digital I/O and GPS sensor supported via 2 serial sensor ports (RS232 or RS422/485), with our optional CANgate interface available for CAN bus applications. All DT8x features are retained including Modbus for SCADA, Ethernet, Web, FTP and multiple SDI-12 sensor networks. Communications features include RS232 with modem support, USB, Ethernet and USB memory ports.

ELTEK SQ1000 Series Data Loggers



Eltek specialises in custom made portable data logging systems to satisfy a wide range of user requirements. Eltek SQ1000 Series Squirrel data loggers provide a flexible combination of 124 channels, ranges, memory sizes and extra options. The Squirrel Datalogger is a compact, portable instrument with many applications in the field of datalogging. The Squirrel accepts a large range of input sensors, including temperature, voltage, current and digital signals, all of which can be configured locally using the Squirrel panel controls or remotely using Eltek's "Darca" software. Connection to the Squirrel data logger can be made directly or via modem, GSM modem or Ethernet.



DATA TRANSLATION®



USB / PCI Data Acquisition

Data Translation has data acquisition PCI and USB board offerings in every category. The DT9800-Series is a complete line of USB modules that offers a wide range of choices, featuring easy connections, 24-bit resolution, digital I/O, isolation, auto-ranging, and even thermocouple support.

The DT300-Series and DT3010-Series offer the best of PCI boards, including analog inputs with 16-64 channels up to 1.25 Mhz throughput for all your data acquisition needs.



Econ Series - Low Cost USB Data Acquisition

A range of analog input channels (6, 8, 16, or 24) Simultaneous sampling rates up to 150kHz 2 analog outputs 16 digital I/O lines with 1 counter/timer Packaged with the GO! application for oscilloscope, chart recorder, voltmeter, file viewer, analog output, digital I/O, and counter/timer functions



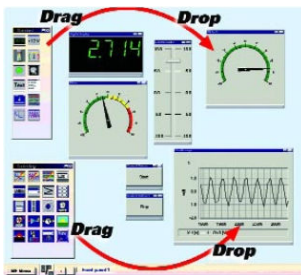
Sound and Vibration Solutions

With 24 bit resolution and simultaneous analog inputs with integrated anti-aliasing filters, and synchronized period measurement (tacho input), Data Translation is offering USB solutions for 4 or 8 sensors, IEPE support included. The systems are scalable so that applications with 16 or 24 channels can be realized as well.



PCI Frame Grabbers and Machine Vision

Data Translation Provides Two Series Frame Grabbers: Mach-2 & Mach-1. Our Mach-2 Series Frame Grabbers Include the DT-3162board, Which Features a programmable Front-end & High Speed Image Acquisition, our DT-3145 Camera Link board. Our Mach-1 series Offers a wide range of features including Comite Color' RGB-Color, Monochrome, Variable Scan, Line Scan & Digital capture.



Measure Foundry Software

Measure Foundry is a powerful visual software environment for creating test and measurement, control, and analysis applications. By dragging and dropping instrument-like components, called panels, on to your worksheet and configuring their property pages, you can quickly develop powerful applications. No programming and no wiring is required!



**Aashay Measurements
& Controls**

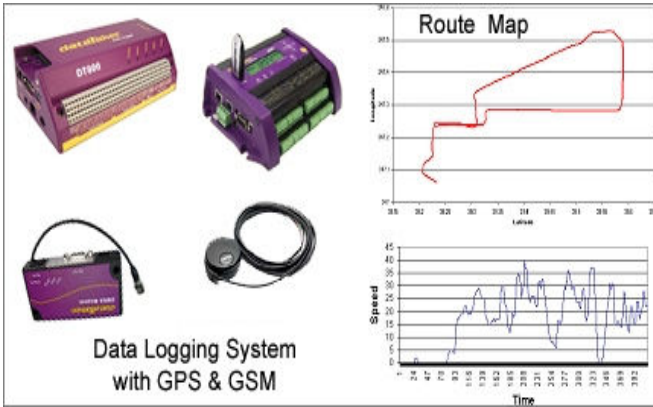
Our Value Addition :

GPS and GSM Based Solutions

Vehicle Position detection and Route Mapping is a critical requireme in Automotive Testing. We have developed a integrated solution usi DataTaker's New generation of DT800 and Dt8x series of intelligent Da Logger Systems. This solution acquires the Analogue Channe (Temperature, Pressure, Brake Force etc.) and Digital channels (RPM, Ge Position) with respect to GPS Parameters (latitude, longitude, speed). TI Remote monitoring and Control with Mobile telephony is achieved through tl GSM technology.

Customised Data Logger Kits

For Field Data Logging Applications we have developed total kit from various types of sensors and integrating those with Systems from **Grant UK, Data Translation USA, Eltek UK, DataTaker Australia, Nege GmbH and Carlo Gavazzi**



**Data Logging System
with GPS & GSM**



Our Associates

Softlink Automation
S. A. Electronics

For more information log on to:

www.aashaymeasurements.com

www.aashaydaq.com

Regional Representative



**Aashay Measurements
& Controls**

Measurement & Automation Solutions

213, 'Rajdhani Complex, Opposite Honda Showroom,
Pune-satara Road.

Pune-411 043. -Maharashtra - India.

Tel.:+91-20-24376819 /32506337

Fax:+91-20-24376819

Cell:+91-9422031263

Email: info@aashymeasurements.com

: sales@aashaydaq.com

Website: www.aashaymeasurements.com